

The “machined” features of the part can be created with cuts to “face” the ends of the cylindrical protrusions. A standard tapped hole, and a thru hole with two countersinks are also added as “machined” features. You will be using the dimensions from the machine drawing (Fig. 6.12).

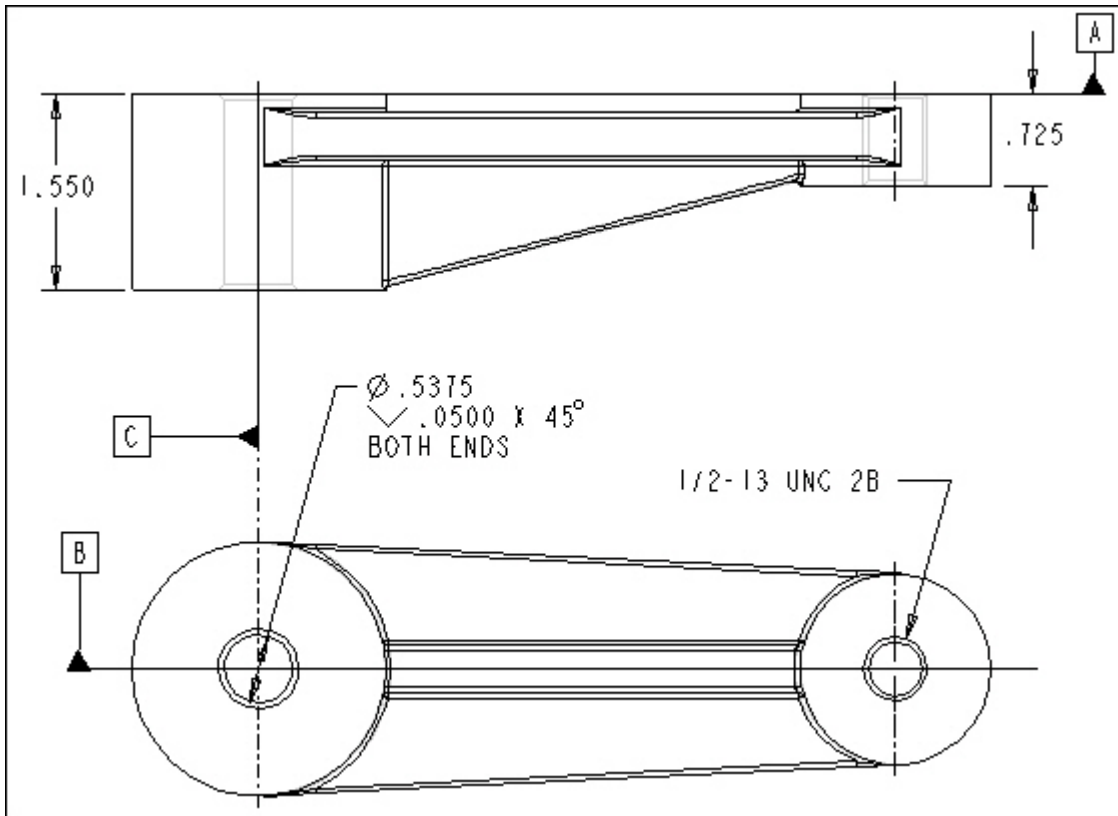


Figure 6.12 Clamp Arm Machining Drawing

Pick on datum **TOP** to pre-select it ⇒ ⇒ **RMB** ⇒ **Remove Material** ⇒ **RMB** ⇒ **Define Internal Sketch...** ⇒ pick on the yellow arrow to flip the direction of viewing [Fig. 6.13(a)] ⇒ **MMB**

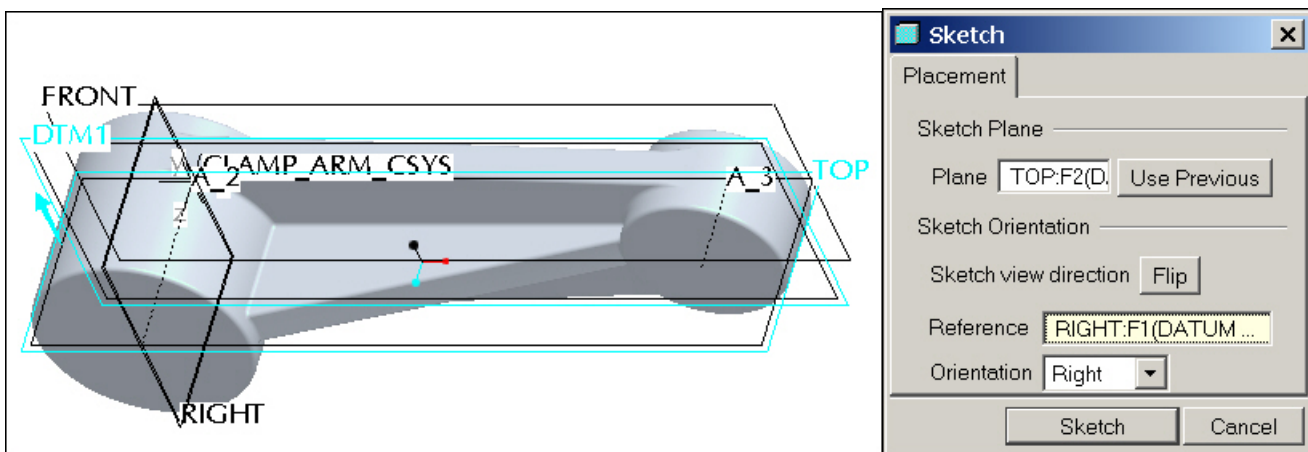


Figure 6.13(a) Viewing Direction