



Click: **Info** from the menu bar ⇒ **Bill of Materials** ⇒  [Fig. 7.27(b)] ⇒ **OK** [Fig. 7.27(c)] ⇒  **Start the view manager** ⇒ **Xsec** tab ⇒ **New** ⇒ type name **A** ⇒ **Enter** ⇒ **Planar** ⇒ **Single** ⇒ **Done** ⇒ **Plane** ⇒ pick datum **ASM\_TOP** ⇒ **Display** ⇒ **Set Active** ⇒ **Edit** ⇒ **Redefine** ⇒ **Hatching** ⇒ **Spacing** ⇒ **Half** ⇒ **MMB** ⇒ **MMB** ⇒ **Display** ⇒ **Show X-Hatching** ⇒ **View** (from Menu Bar) ⇒ **Shade** (Fig. 7.28) ⇒ **Display** (from View Manager) (Fig. 7.29) ⇒ **Normal** ⇒ **Close** ⇒ **Ctrl+S**

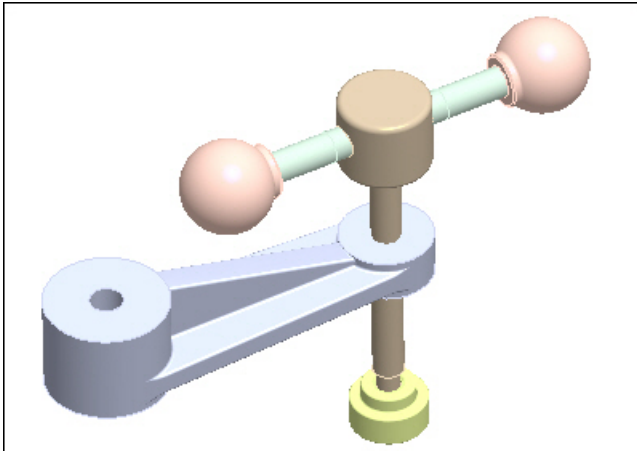


Figure 7.27(a) Completed Clamp\_Subassembly

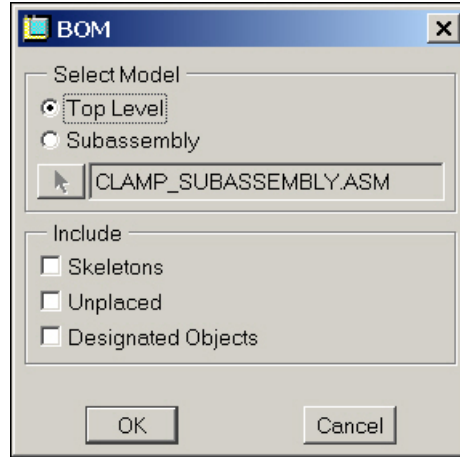


Figure 7.27(b) BOM

Bom Report : CLAMP_SUBASSEMBLY					
Assembly CLAMP_SUBASSEMBLY contains:					
Quantity	Type	Name	Actions		
1	Part	<a href="#">CLAMP_ARM</a>			
1	Part	<a href="#">CLAMP_SWIVEL</a>			
1	Part	<a href="#">CLAMP_FOOT</a>			
1	Part	<a href="#">CLAMP_STUD5</a>			
2	Part	<a href="#">CLAMP_BALL</a>			

Figure 7.27(c) Bill of Materials (BOM)

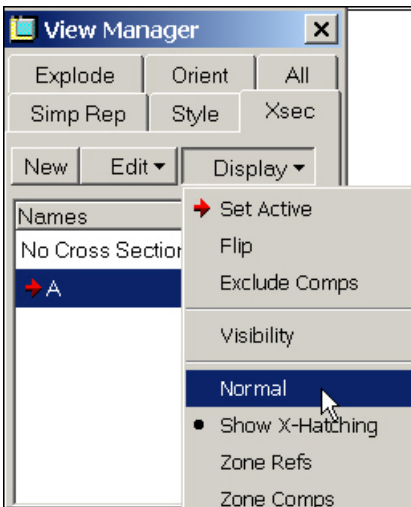


Figure 7.28 View Manager

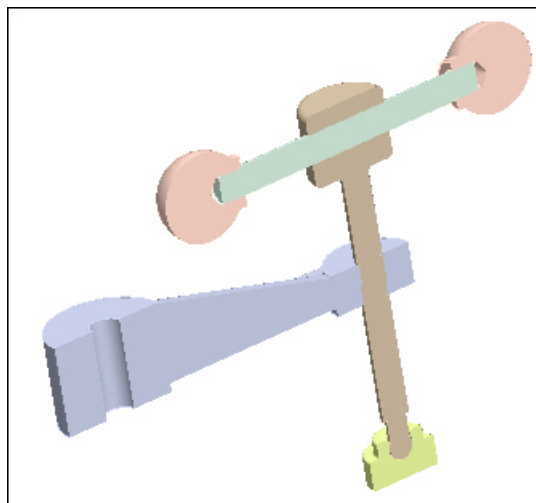


Figure 7.29 Section Displayed