

## Casting Cover

### Advanced Projects

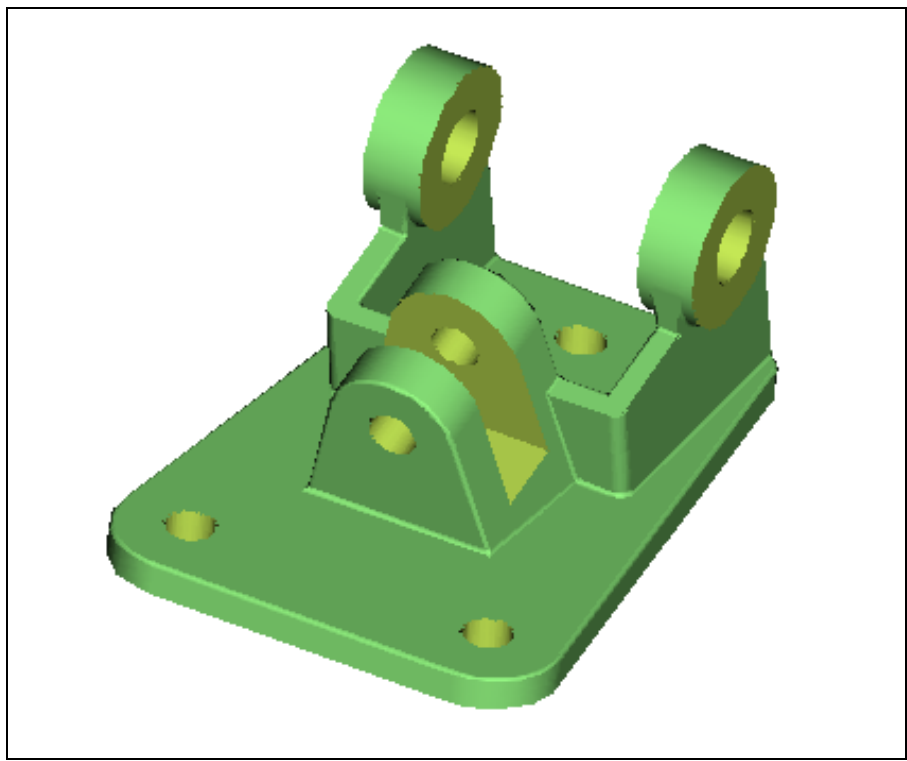


Figure A.1  
Casting

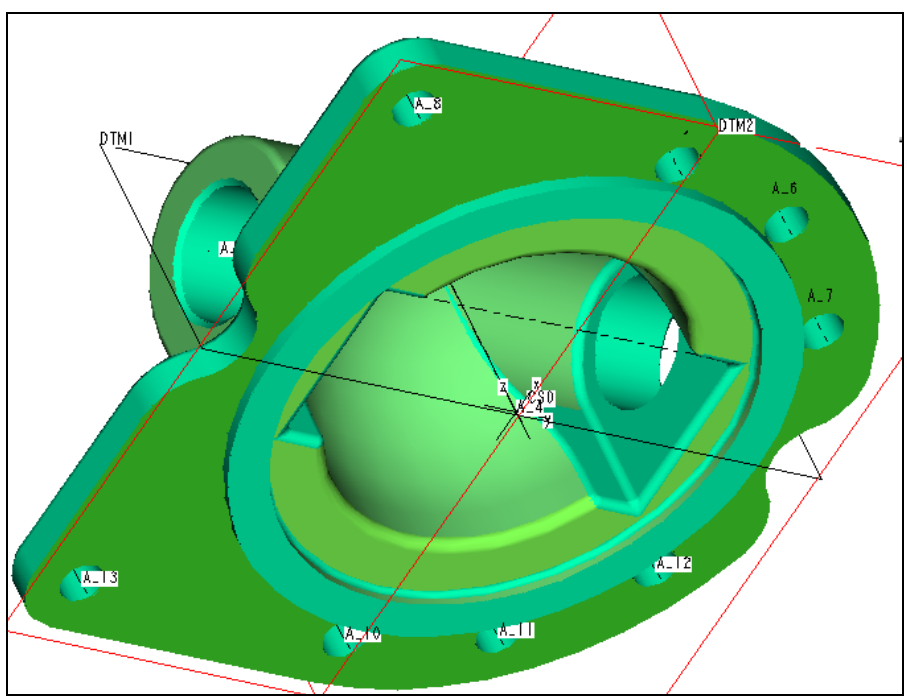


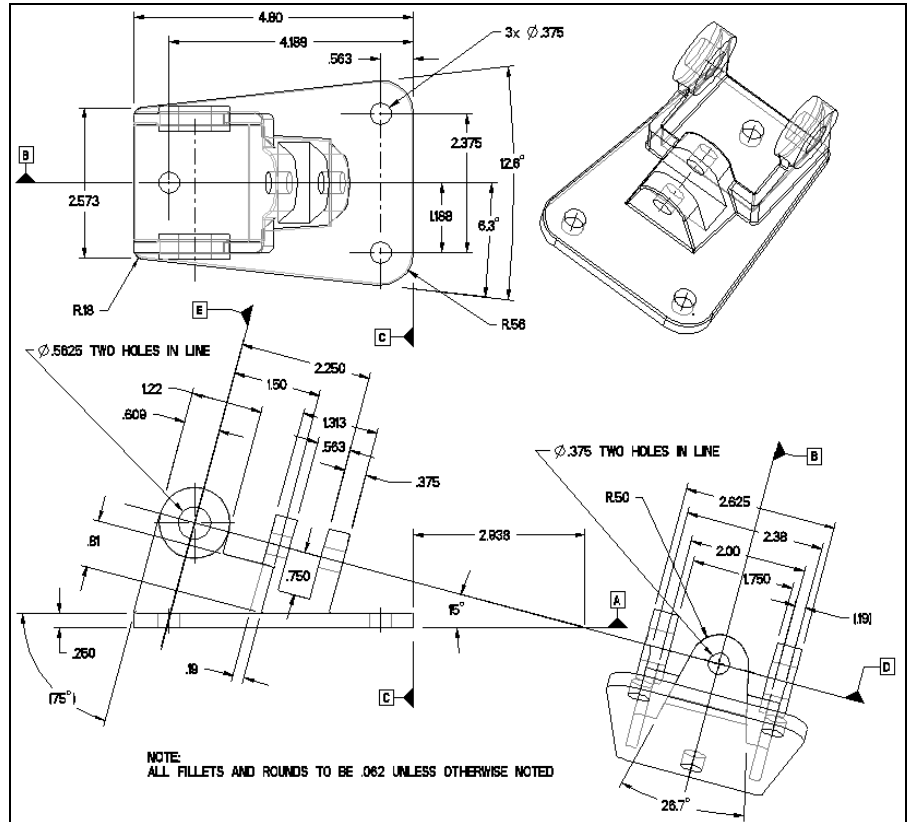
Figure A.2  
Cover

### Casting

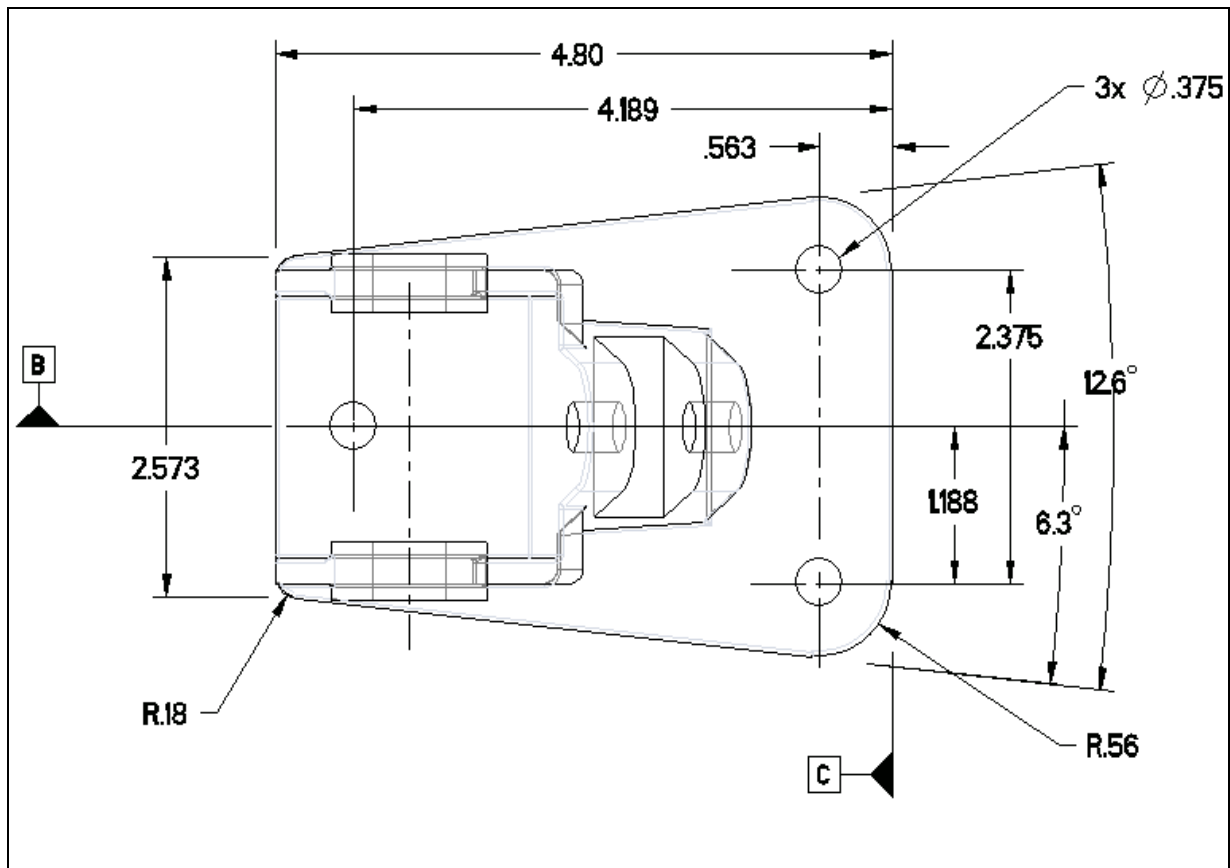
**Figure A.3**  
Casting Drawing

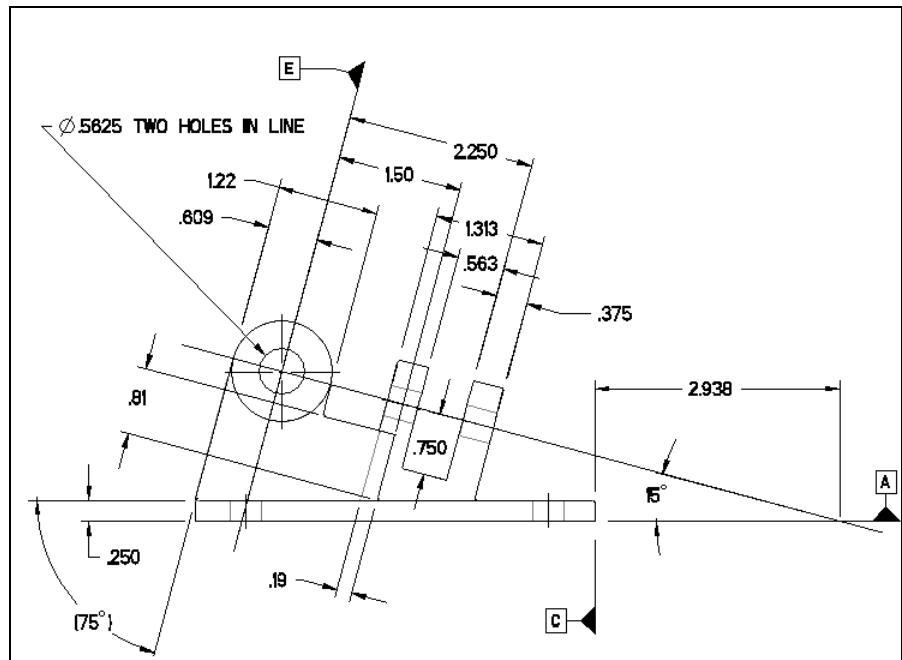


**EGD REFERENCE**  
**Fundamentals of Engineering**  
**Graphics and Design**  
 by L. Lamit and K. Kitto  
 See page 411,  
 Problem 12.13.

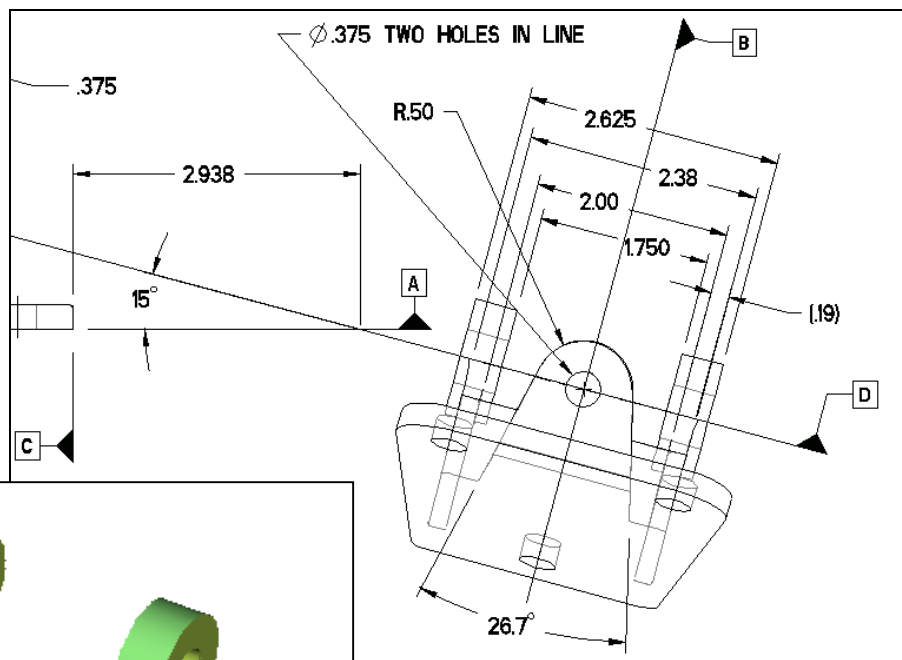


**Figure A.4**  
Casting Drawing,  
Top View

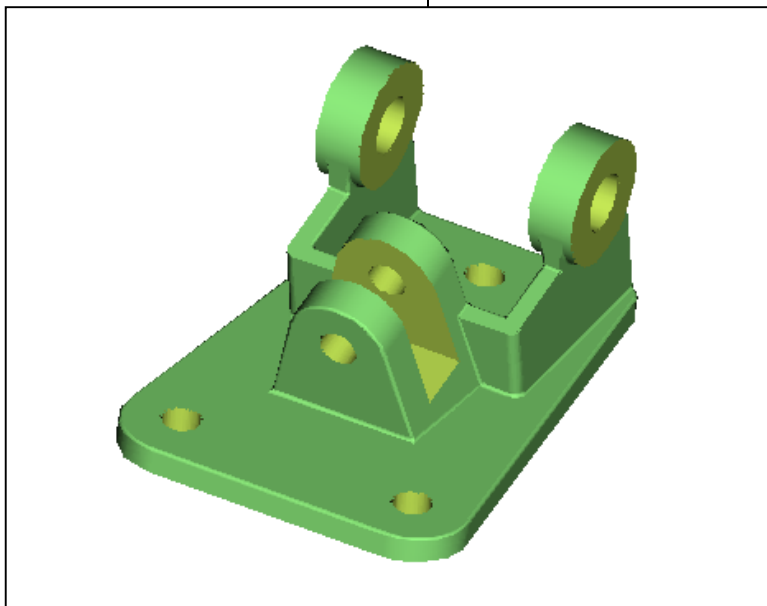




**Figure A.5**  
Casting Drawing, Front View



**Figure A.6**  
Casting Drawing,  
Auxiliary View

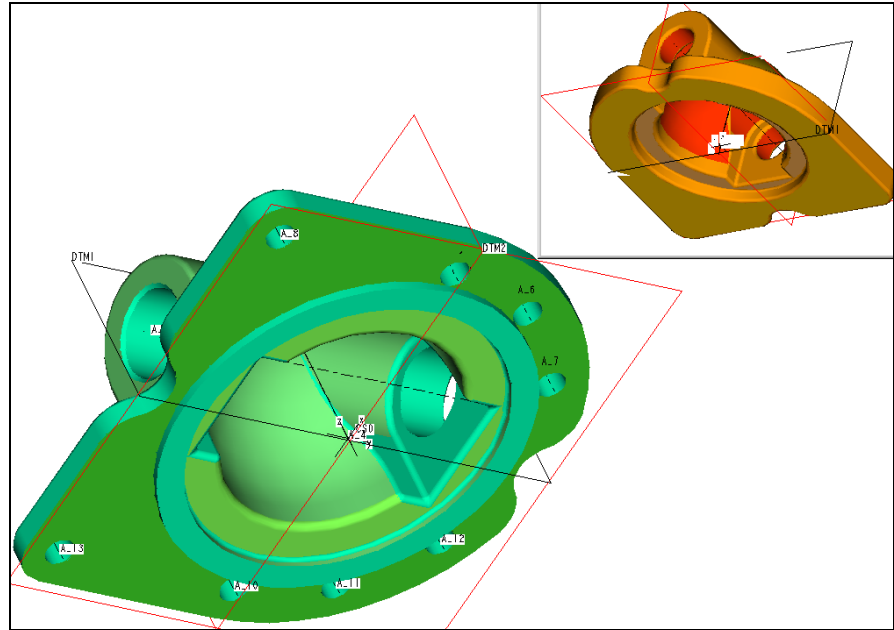


### Cover

**NOTE**

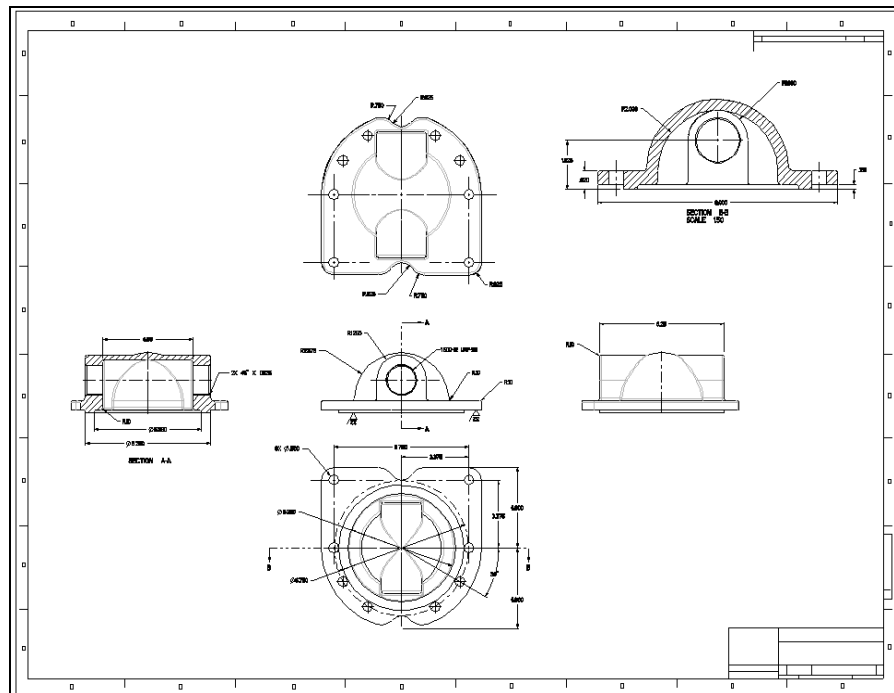
Model the casting, save it under a new name, and continue modeling the machine part.

When it is complete, you will have two separate parts, a casting (**workpiece**) and a machined part (**design part**), that can be used to create the *manufacturing model* for use in Pro/NC.

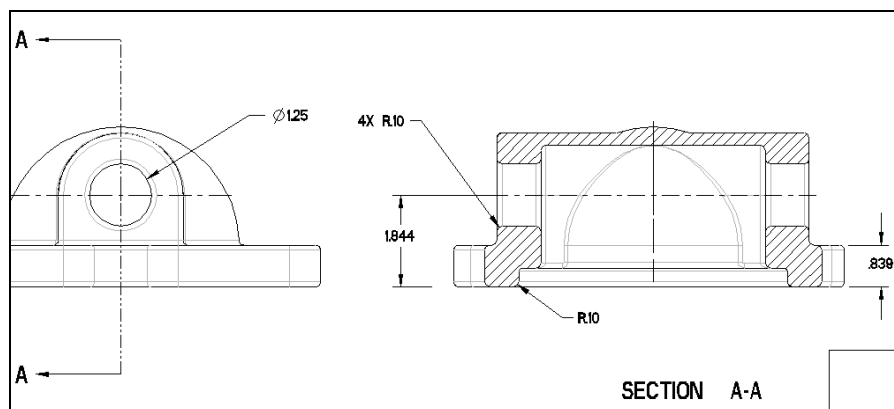


**Figure A.7**  
Cover Machined Part and Cover Casting (inset)

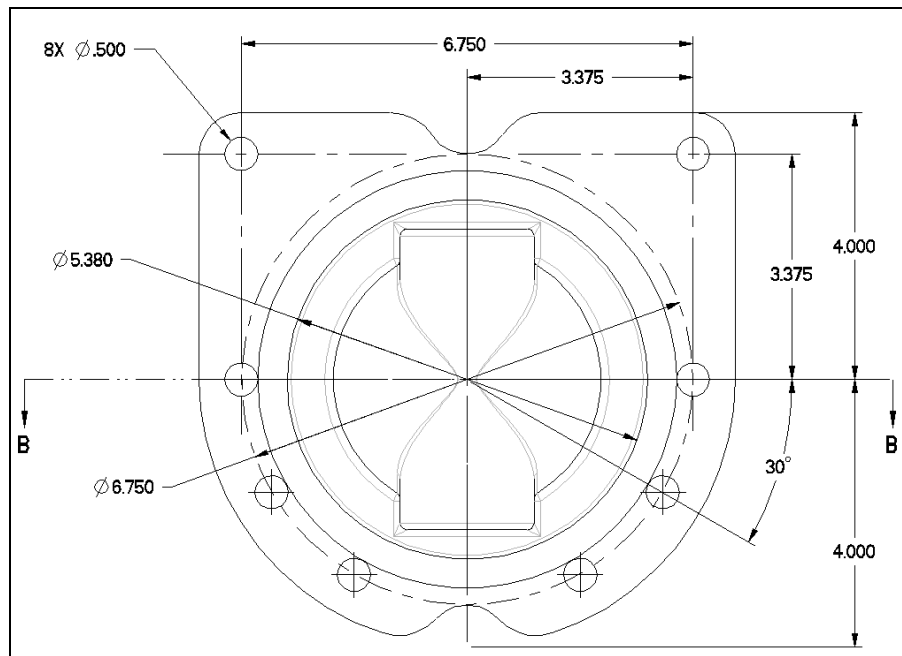
**EGD REFERENCE**  
**Fundamentals of Engineering Graphics and Design**  
by L. Lamit and K. Kitto  
See page 338.  
Problem 10.33.



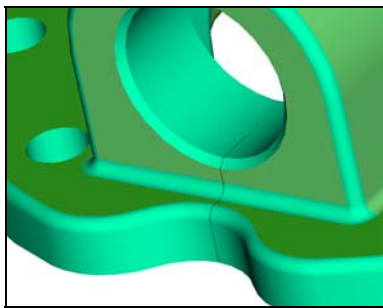
**Figure A.8**  
Cover Drawing



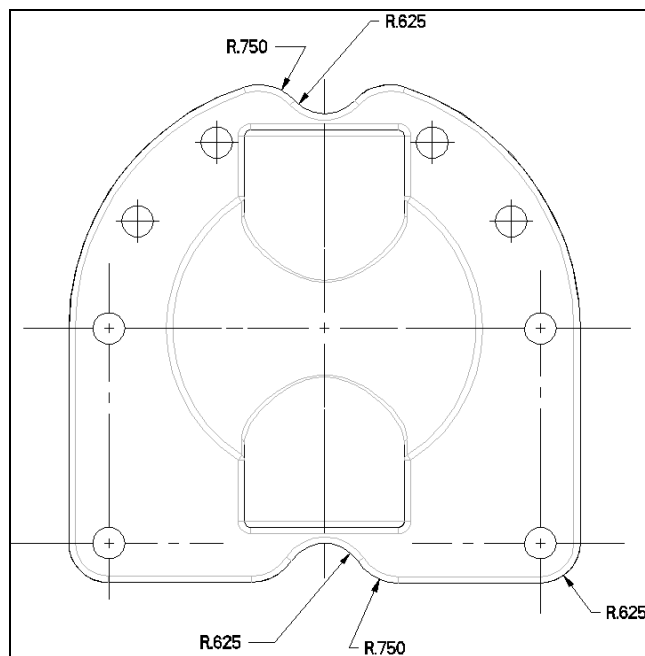
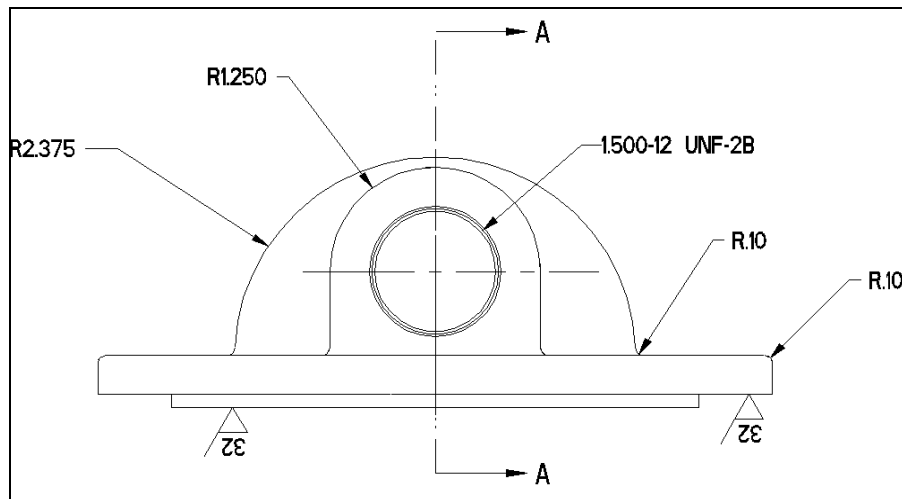
**Figure A.9**  
Cover Casting Dimensions



**Figure A.10**  
Cover Drawing, Bottom View

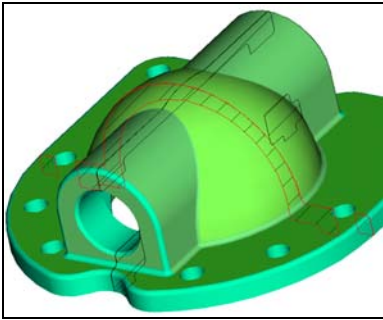


**Figure A.11**  
Cover Drawing, Front View

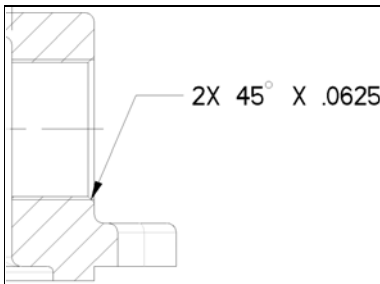
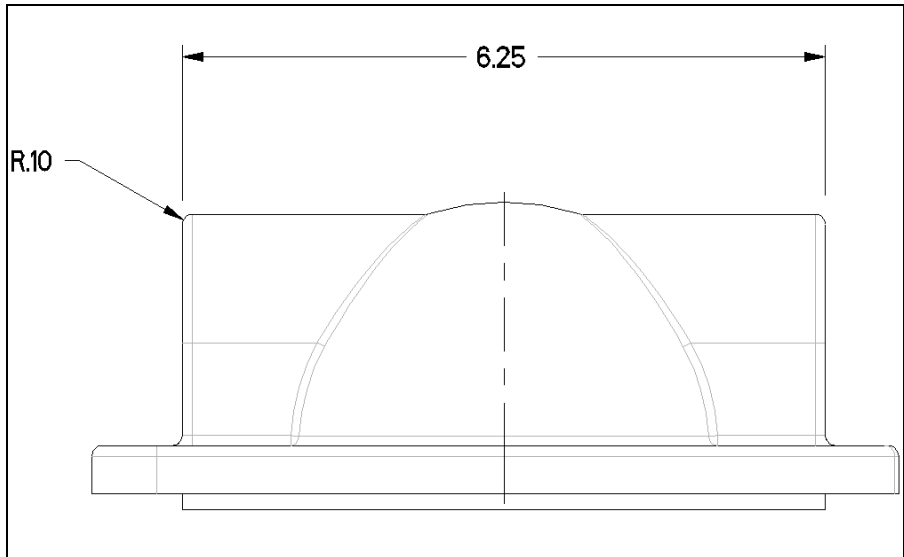


**Figure A.12**  
Cover Drawing, Top View

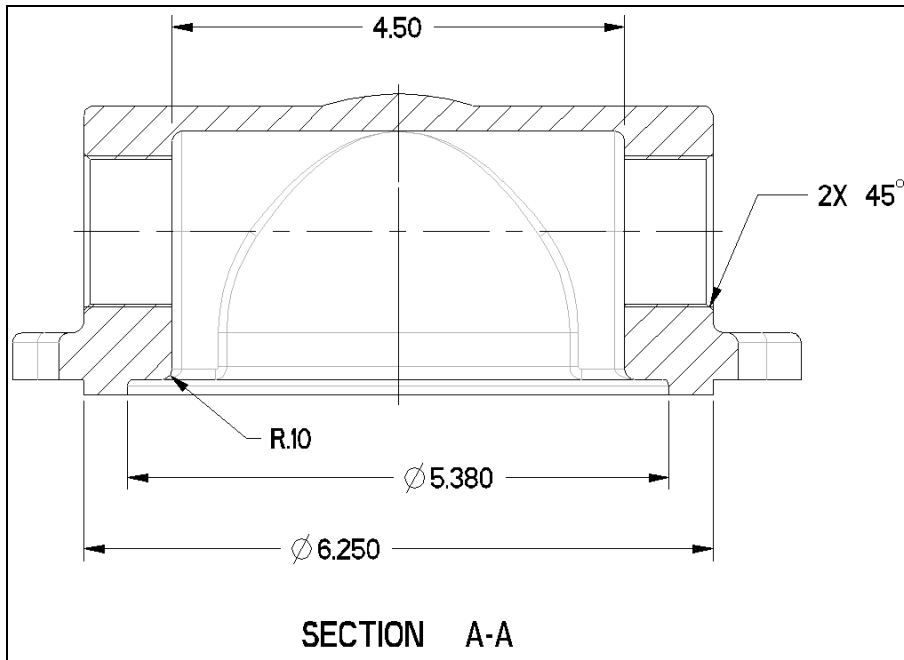
A-6 Advanced Projects



**Figure A.13**  
Cover Drawing,  
Right Side View



**Figure A.14**  
Cover Drawing,  
SECTION A-A



**Figure A.15**  
Cover Drawing,  
SECTION B-B

